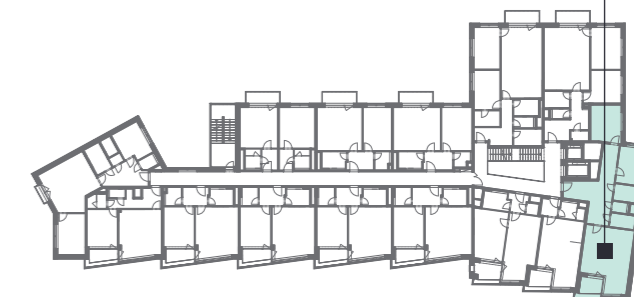


309

3.NP

3+kk

90,8 m²



| | | |
|-------------------------------------|--|---------------------------|
| 01 | Předsíň / Hall | 23,5 m ² |
| 02 | Ložnice / Bedroom | 12,5 m ² |
| 03 | Pokoj / Room | 10,6 m ² |
| 04 | Koupelna / Bathroom | 4,8 m ² |
| 05 | WC / Toilet | 2,0 m ² |
| 06 | Komora / Utility Room | 3,9 m ² |
| 07 | Obývací pokoj + KK / Living Room + Kitchen | 31,1 m ² |
| OBYTNÁ PLOCHA / LIVING AREA | | 88,4 m² |
| | Svislé konstrukce / Vertical Structures | 2,4 m ² |
| PLOCHA BYTU / APARTMENT AREA | | 90,8 m² |
| 08 | Lodžie / Loggia | 4,3 m ² |
| PLOCHA CELKEM / TOTAL AREA | | 95,1 m² |

