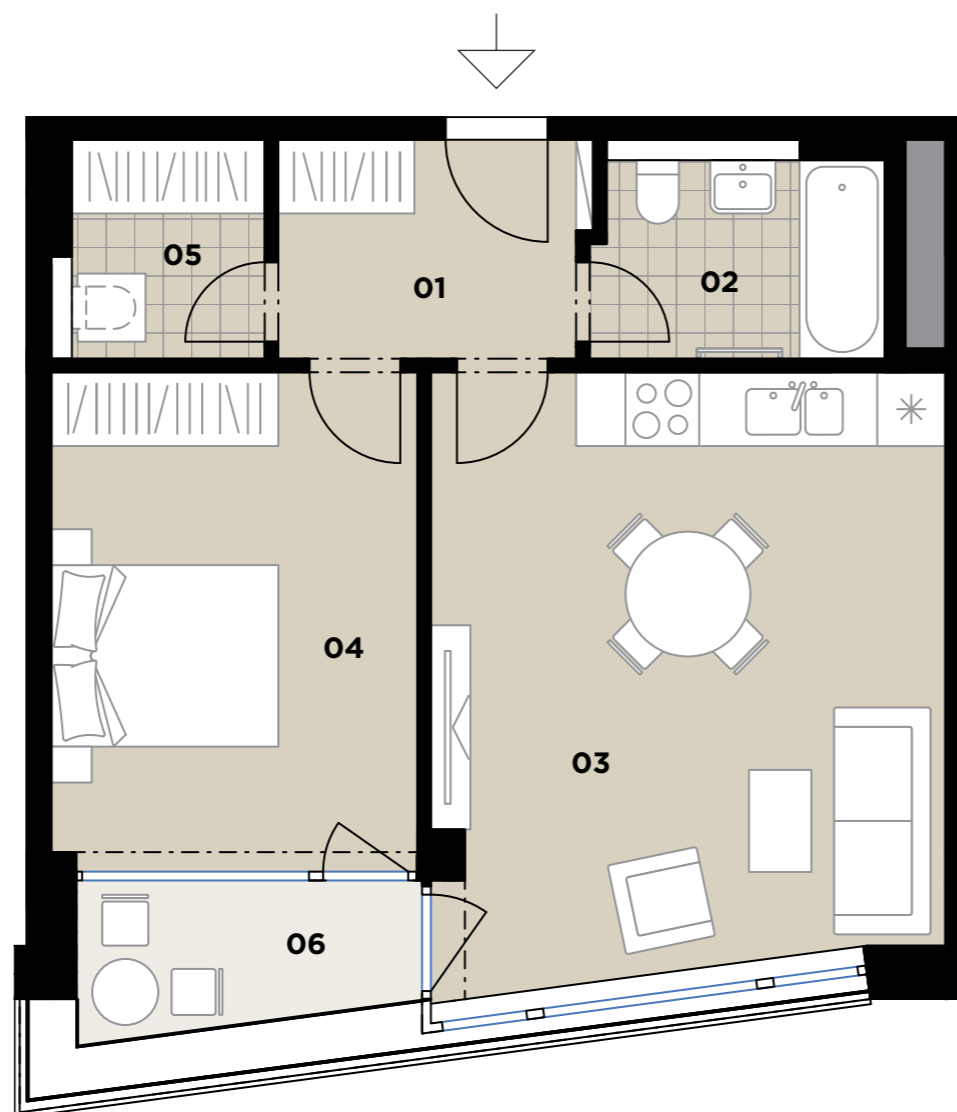
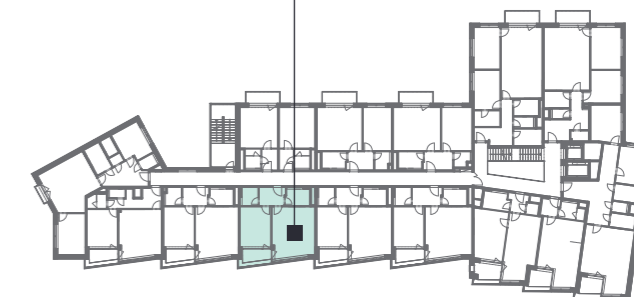


304

3.NP

2+kk

53,6 m²



| | | |
|-------------------------------------|--|---------------------------|
| 01 | Předsíň / Hall | 5,6 m ² |
| 02 | Koupelna / Bathroom | 4,8 m ² |
| 03 | Obývací pokoj + KK / Living Room + Kitchen | 23,8 m ² |
| 04 | Ložnice / Bedroom | 14,2 m ² |
| 05 | Komora / Utility Room | 3,4 m ² |
| OBYTNÁ PLOCHA / LIVING AREA | | 51,8 m² |
| | Svislé konstrukce / Vertical Structures | 1,8 m ² |
| PLOCHA BYTU / APARTMENT AREA | | 53,6 m² |
| 06 | Lodžie / Loggia | 3,9 m ² |
| PLOCHA CELKEM / TOTAL AREA | | 57,5 m² |

